

USBCAM OnSemi 5M/8M

5M/8M USB3 Camera

Drivable general purpose LEDs (code 50, 51, 52)

Thermal sensor (optional)

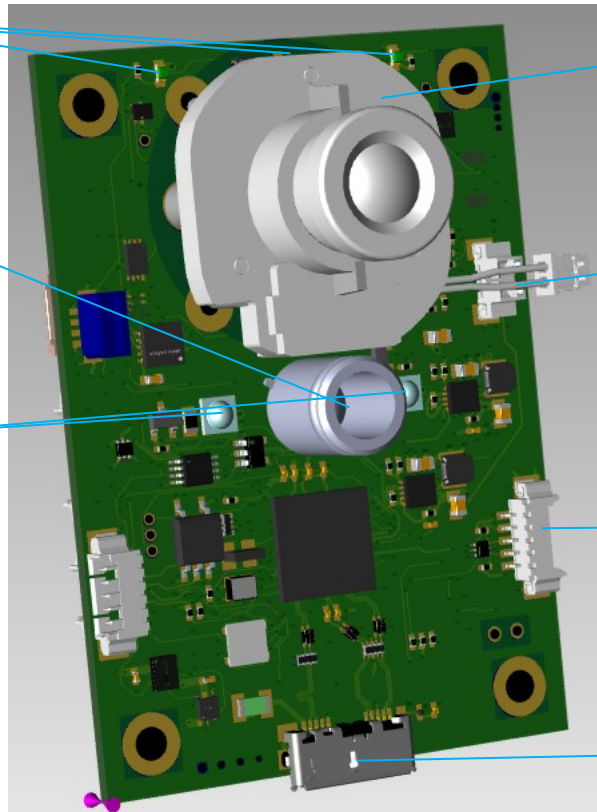
Integrated LEDs flashing

M12, C/CS mount compatible

IR filter switcher (optional)

I2C connector for external board (optional)

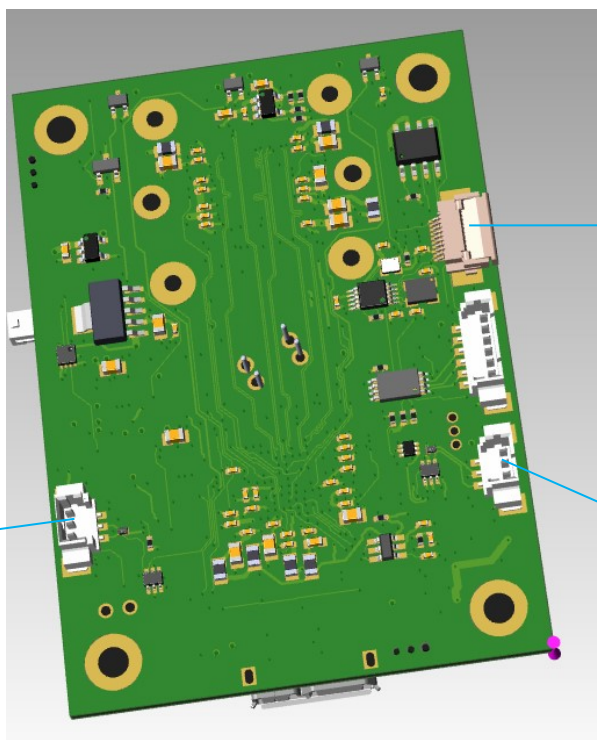
USB3



From top to bottom:
GND
GPIO (code 25)
GPO0 (code 44)

Autofocus (m3F)

From top to bottom:
GND
GPO1 (code 24)
GPI1 (code 17)



Specifications

Dimensions	50 x 70 mm
Weight	max 30g
Operating temperature	0 to +70°C
Power consumption (USB, 5V)	max 600mW
Current drawn	max 120mA
CMOS	AR0521: 5M (2592x1944), 1/2.5", 2.2 x 2.2 μm, 12bits AR0820: 8M (3840x2160), 1/2", 2.1 x 2.1 μm, 12bits
Data rate	up to 2.4 Gbit/s
Drivers	Windows 8.1 / 10 and Linux (V4L2) fully compatible drivers
Mount	M12 (default), C/CS (optional)
GPIO	2 inputs and 2 outputs

Power supply

USB3	4.75 to 5.25V
-------------	---------------

Interface

Image processing	Fully configurable Cynove custom software smart ISP for increased output quality
API	API as a DLL library to acquire pictures and change camera settings. Delivered with a sample code.
API Tester	User interface (Windows only) to test and show camera capabilities to your client

Features

Unique ID	Each board has its own non alterable unique ID
Triggers	Can be synchronized on a trigger or generate a trigger, for multiple cameras synchronization
Autofocus	Board is compatible with most autofocus available
Filter switcher (optional)	Optional driveable mount for switching between a 2 filters set, daylight and night mode
Thermal sensor (optional)	Thermal sensor (32x24) available for further control of the temperature of the scene
Custom board (large volume orders only)	Custom board designed to your own dimensions and specifications can be manufactured
Sustainability	Long term