

## USBCAM OnSemi 5M/8M

5M/8M USB3 Camera

Drivable general purpose LEDs (code 50, 51, 52)

Thermal sensor (optional)

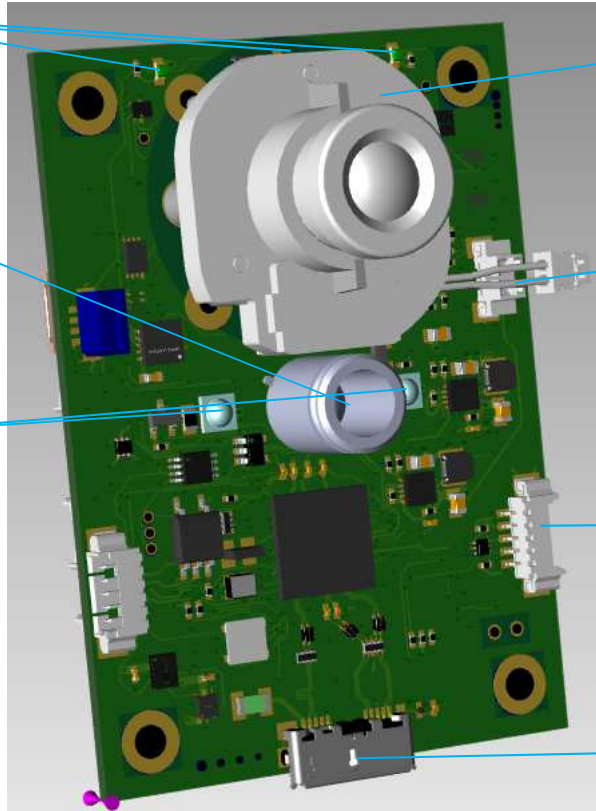
Integrated LEDs flashing

M12, C/CS mount compatible

IR filter switcher (optional)

I2C connector for external board (optional)

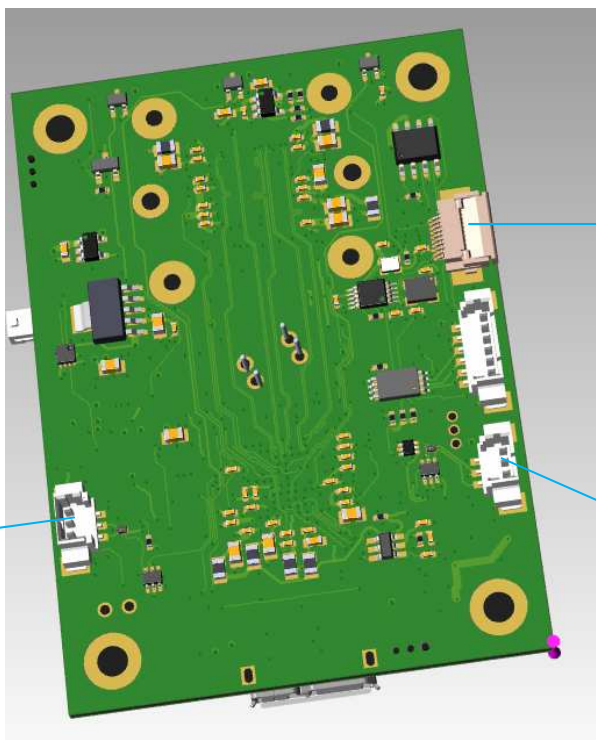
USB3



Autofocus (m3F)

From top to bottom:  
GND  
GPIO (code 25)  
GPO0 (code 44)

From top to bottom:  
GND  
GPO1 (code 24)  
GPI1 (code 17)



## Specifications

<b>Dimensions</b>	50 x 70 mm
<b>Weight</b>	max 30g
<b>Operating temperature</b>	0 to +70°C
<b>Power consumption (USB, 5V)</b>	max 600mW
<b>Current drawn</b>	max 120mA
<b>CMOS</b>	AR0521: 5M (2592x1944), 1/2.5", 2.2 x 2.2 μm, 12bits AR0820: 8M (3840x2160), 1/2", 2.1 x 2.1 μm, 12bits
<b>Data rate</b>	up to 2.4 Gbit/s
<b>Drivers</b>	Windows 8.1 / 10 and Linux (V4L2) fully compatible drivers
<b>Mount</b>	M12 (default), C/CS (optional)
<b>GPIO</b>	2 inputs and 2 outputs

## Power supply

<b>USB3</b>	4.75 to 5.25V
-------------	---------------

## Interface

<b>Image processing</b>	Fully configurable Cynove custom software smart ISP for increased output quality
<b>API</b>	API as a DLL library to acquire pictures and change camera settings. Delivered with a sample code.
<b>API Tester</b>	User interface (Windows only) to test and show camera capabilities to your client

## Features

<b>Unique ID</b>	Each board has its own non alterable unique ID
<b>Triggers</b>	Can be synchronized on a trigger or generate a trigger, for multiple cameras synchronization
<b>Autofocus</b>	Board is compatible with most autofocus available
<b>Filter switcher (optional)</b>	Optional driveable mount for switching between a 2 filters set, daylight and night mode
<b>Thermal sensor (optional)</b>	Thermal sensor (32x24) available for further control of the temperature of the scene
<b>Custom board (large volume orders only)</b>	Custom board designed to your own dimensions and specifications can be manufactured
<b>Sustainability</b>	Long term