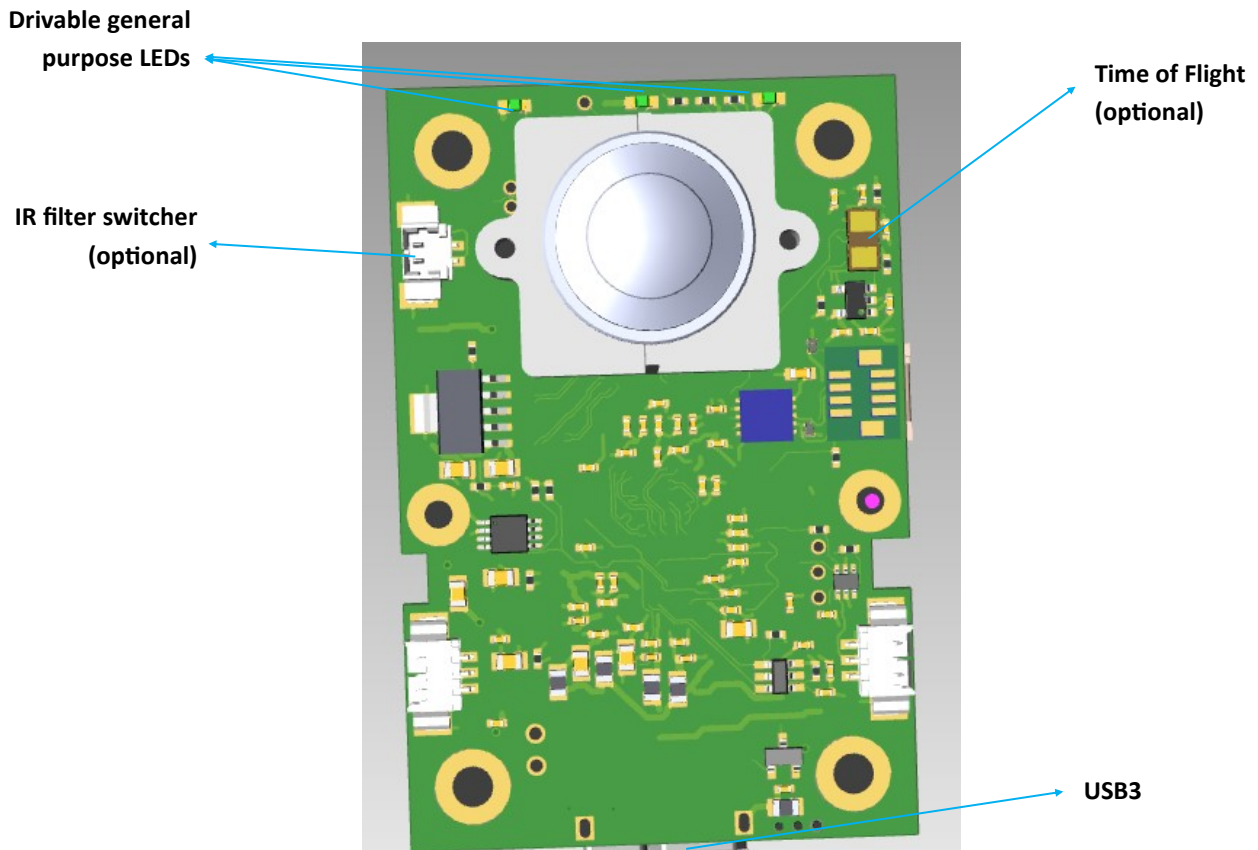


UVCCAM OnSemi 2M/5M/8M

2M/5M/8M UVC Camera



Specifications

Dimensions	40 x 60 mm
Weight	max 30g
Operating temperature	0 to +70°C
Power consumption (USB, 5V)	max 600mW
Current drawn	max 120mA
CMOS	AR0234: 2.3M (1920x1200), 1/2.5", 3 x 3 μm, 12bits AR0521, AR0522: 5M (2592x1944), 1/2.5", 2.2 x 2.2 μm, 12bits
Data rate	up to 2.4 Gbit/s
Drivers	Windows 8.1 / 10 and Linux (V4L2) fully compatible drivers
Mount	M12 (default)
GPIO	2 inputs and 2 outputs

Power supply

USB3	4.75 to 5.25V
-------------	---------------

Interface

Image processing	Fully integrated ISP
UVC	UVC plug and play camera (JPEG, YUV)

Features

Unique ID	Each board has its own non alterable unique ID
Triggers	Can be synchronized on a trigger or generate a trigger, for multiple cameras synchronization
Autofocus	Board is compatible with most autofocus available
Filter switcher (optional)	Optional driveable mount for switching between a 2 filters set, daylight and night mode
Time of Flight (optional)	Optional time of flight module (ToF)
Custom board (large volume orders only)	Custom board designed to your own dimensions and specifications can be manufactured
Sustainability	Long term